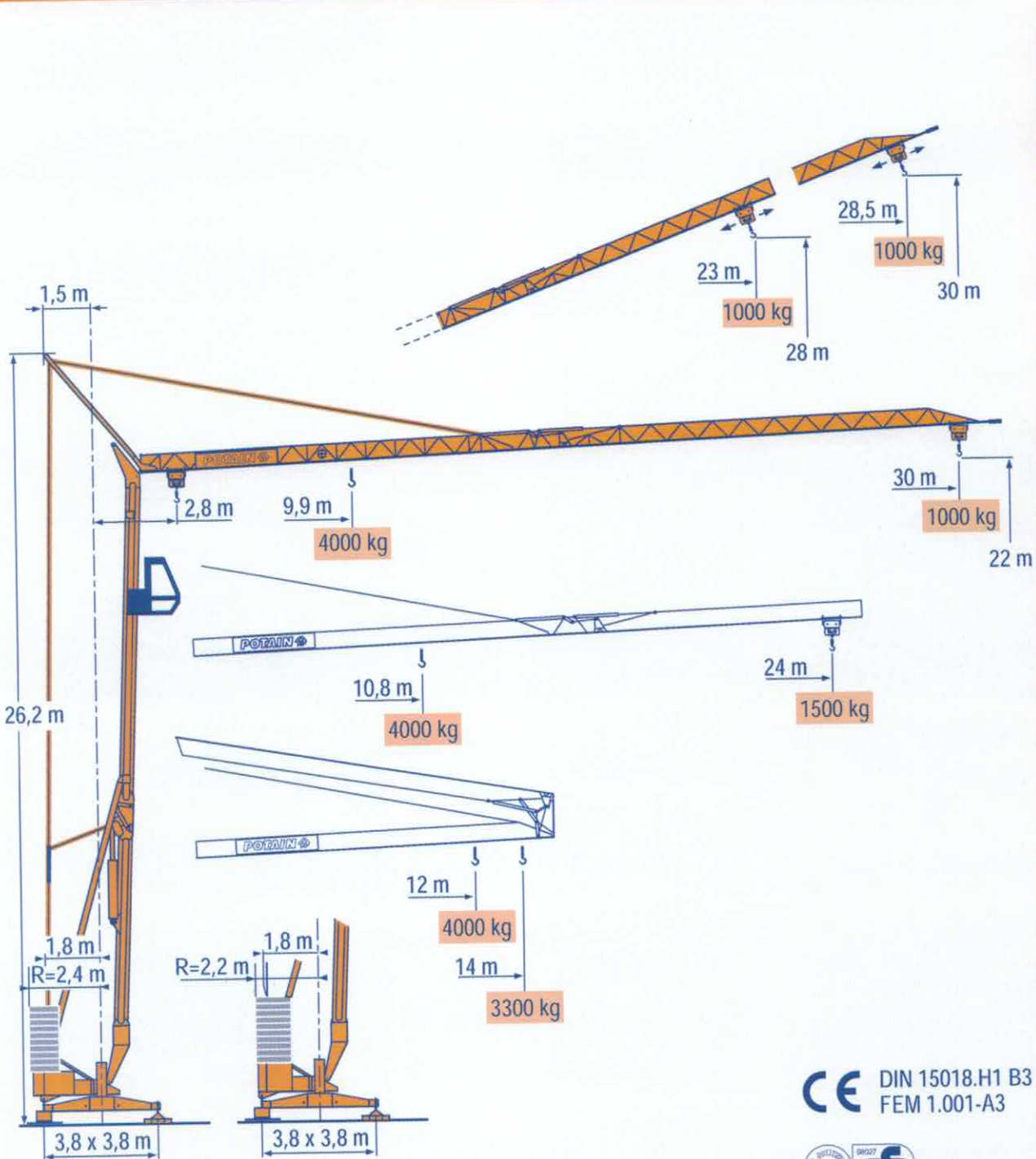


HD 32 A



LMO 1

CE DIN 15018.H1 B3
FEM 1.001-A3



HD



HDT



GTMR



CITY CRANE



TOPKIT MD



MR



MAXI MD



MAXI TOPKIT



POTAIN  [®]



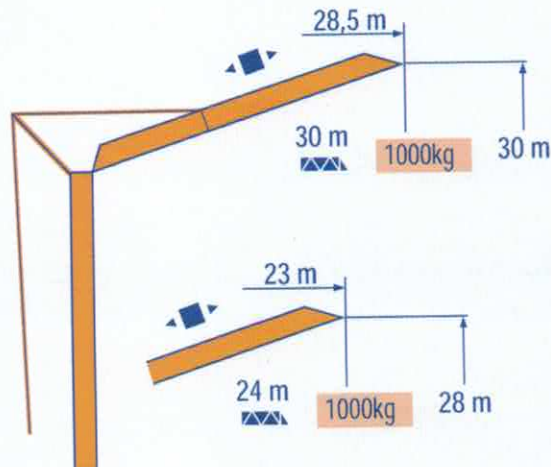
30 m 2,8 ▶ 12 13 14 m
4000 3615 3300 kg

9,9 10 11 12 13 14 15 16 17 18 19 20 22 24 26 28 30 m
4000 3960 3510 3140 2845 2595 2380 2200 2040 1900 1780 1670 1480 1330 1200 1095 1000 kg

24 m 2,8 ▶ 12 13 14 m
4000 3615 3300 kg

10,8 11 12 13 14 15 16 17 18 19 20 22 24 m
4000 3920 3515 3180 2905 2670 2470 2290 2135 2000 1880 1670 1500 kg

LMO 1



LMO 1



Chariot distributeur

Traversing trolley

Carrellino distributore



Verfahrbare laufkatze

Carro distribuidor

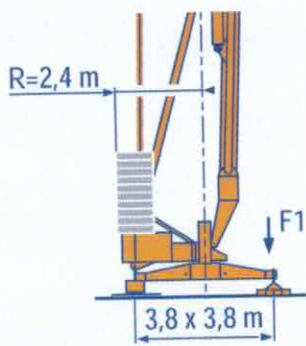
变幅小车

Réactions
Eckdrücke

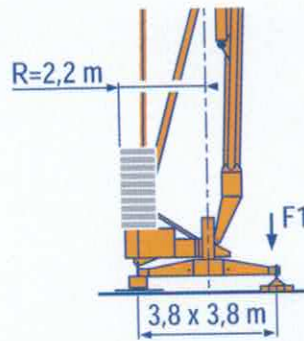
F Reactions
D Reacciones

GB Reazioni
E 反力

I
C



F1 ● 19,7 t ■ 14,4 t
▲ 11,4 t



F1 ● 20,4 t ■ 15 t
▲ 11,4 t

LMO 1

● Réactions en service
■ Réactions hors service
▲ A vide sans lest ni train de transport avec flèche et hauteur maximum

F Reactions in service
Reactions out of service
Without load, ballast or transport axles, with maximum jib and maximum height.

GB Reazioni in servizio
Reazioni fuori servizio
A vuoto, senza zavorra ne assali di trasporto con braccio massimo e altezza massima

● Reaktionskräfte in Betrieb
■ Reaktionskräfte außer Betrieb
▲ Ohne Last, Ballast und Transportachse, mit Maximalausleger und Maximalhöhe.

D Reacciones en servicio
Reacciones fuera de servicio
Sin carga, sin lastre, ni tren de transporte, flecha y altura máxima.

E 工作状态下的反应
非工作状态下的反应
空载无压重也无运输车
有吊臂和最大高度

Mécanismes
Antriebe

F Mechanisms
D Mecanismos

GB Meccanismi
E 机构

I
C

| | | | Trolley | | | Cran | | | ch - PS hp | kW |
|-----|-----------|---------------------|---------|------|------|------|------|------|---------------|-------|
| | | | ● | ■ | ▲ | ● | ■ | ▲ | | |
| ▲ | 15 RPC 10 | m/min | 9 | 27 | 54 | 4,5 | 13,5 | 27 | 15 | 11 |
| | | kg | 2000 | 2000 | 1000 | 4000 | 4000 | 2000 | | |
| ◀ ▶ | 3 D2 V5/2 | m/min | 21 - 42 | | | | | | 2,7 | 2 |
| ● | RCV 20 | tr/min U/min rpm | 0 → 1 | | | | | | 3 | 2,2 |
| ◀ ▶ | TVD 121 | m/min | 25 | | | | | | 2 x 1,4 | 2 x 1 |

| CEI 38 | IEC 38 | kVA | 84/534 - 87/405 |
|------------------------|--------|--------|-----------------|
| 400 V (+6% -10%) 50 Hz | | 20 kVA | |

LMO 1

▲ Levage
◀ ▶ Distribution
● Orientation
● Translation
Conforme aux directives CEE 84/534 et 87/405 sur le niveau acoustique

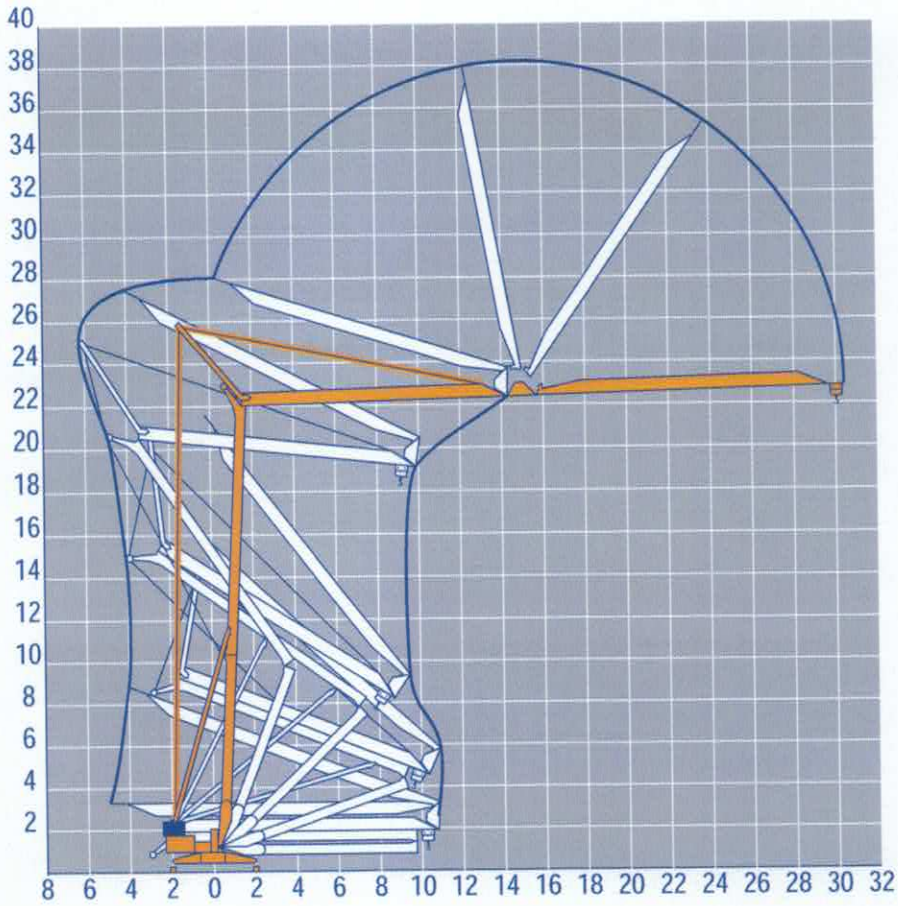
F Hoisting
Trolleying
Slewing
Travelling
In compliance with the EEC 84/534 and 87/405 Instructions on noise level

GB Sollevamento
Distribuzione
Rotazione
Traslazione
Conforme alle direttive CEE 84/534 e 87/405 sul livello acustico

▲ Heben
◀ ▶ Katzfahren
● Schwenken
● Kranfahren
Gemäss EWG-Richtlinien 84/534 und 87/405 für den Schall-Leistungspegel

D Elevación
Distribución
Orientación
Traslación
Conforme con las directivas CEE 84/534 y 87/405 sobre el nivel acustico

E 起升
变幅
回转
行走
符合 CEE 84/534 - CEE 87/405 声晌度规定



LMO 1

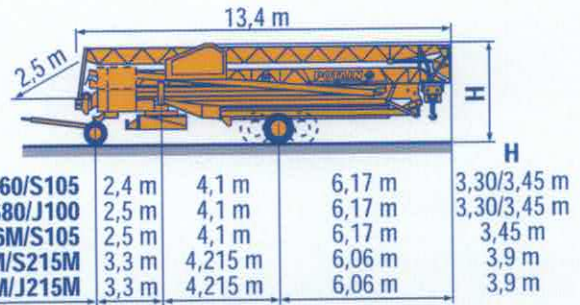
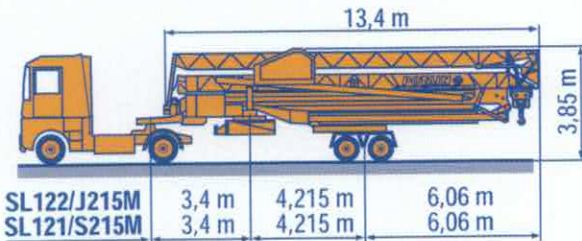
Modificazioni riservate
Modificaciones reservadas
Subject to modification
Änderungen vorbehalten
Modificazioni riservate

Transport
Transport

F Transport
D Transporte

GB Trasporto
E 运输

I
C



SL122/J215M

SL121/S215M

CJ125M/J215M

DJ126M/S215M

DJ126M/S105

DS60/S105

DS80/J100

LMO 1

- Chantier
- Baustelle

- F Site
- D Obra

- GB Cantiere
- E 工地运输

- I
- C

Printed in France



HD 32 A

Copyright. Reproduction interdite © POTAIN 1997

18, Rue de Charbonnières, B.P. 173-F
69132 ECULLY Cedex
Tél. (33)04.72.20.20.20
Fax (33)04.72.20.20.00
<http://www.potain.fr>
E-mail : mkt@potain.fr

Deutschland
POTAIN GmbH Tel : 06.105.704.0
Italia
POTAIN S.p.A. Tel : 039.65.631
China
Zhangjiagang POTAIN Tel : 520.877.1451

Réf. 1997.44 LMO 1

Realisation SODIPE